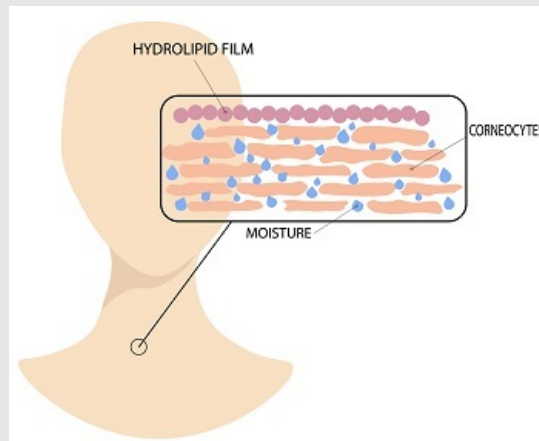


Eager to know what's new at StratiCELL this month ?

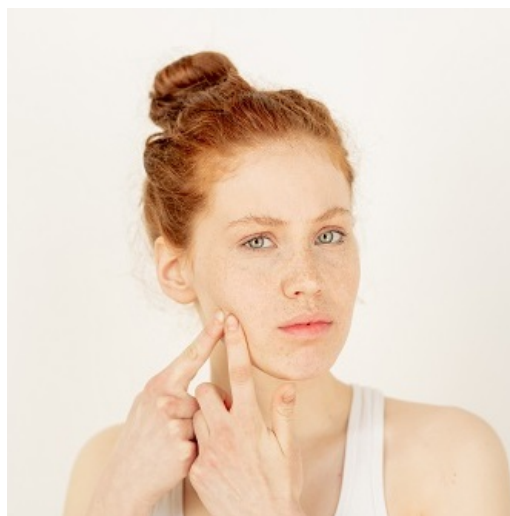
Your *in vitro* testing partner send you some fresh news to improve your innovations !!



Lipid metabolism and epidermal barrier A new transcriptomic approach !

Permeability and barrier of the skin are ensured by the **epidermal lipid content** and the **cornified lipid envelope**. Dermo-cosmetic ingredients are taking good care of this natural protection, by acting on the natural metabolism of epidermal lipids. StratiCELL's experts have defined a new and unique qRT-PCR approach to confirm *in vitro* efficacy on lipid metabolism.

[>>> Lipid-TLDA](#)



In vitro model for anti-acne ingredients

Originally identified as *Bacillus acnes*, it was later named *Propionibacterium acnes* and now known under **Cutibacterium acnes**. This Gram positive anaerobic strain is a commensal of the skin microflora, linked to acne. Elevated production of sebum or blockage of the follicle can cause *C. acnes* to grow and multiply. Cosmetic ingredients are driven to reduce their growth to prevent from

undesired acne. StratiCELL is now integrating *C. acnes* to reconstructed epidermis as a model to identify **anti-acne cosmetic ingredients**.

[>>> C. acnes](#)



Did you know...

....that hydro-alcoholic disinfectant solutions can promote the development of irritant contact dermatitis?

In order to reduce the spread of the coronavirus, it is recommended to wash your hands with soapy water, or hydro-alcoholic solutions if a point of water is not accessible.

The **French Society of Dermatology** informs us that these frequent washes can favour the appearance of contact eczema symptoms. Some recommendations from the **Dermato-Allergology Group** to take good care of our hands !

[>>> Recommendations](#)



15 years at your service !

This year, StratiCELL celebrates its 15th year at your service ! At StratiCELL, we value to provide you the best appropriate study that fits your requirements. Contact us to design the most suitable and cost-effective testing strategies !

[>>> Contact us](#)

StratiCELL

Crealy Science Park, rue Jean Sonet 10,
5032-Isnes - BELGIUM

info@StratiCELL.com
www.StratiCELL.com



This email has been send to {{ contact.EMAIL }}
[Unsubscribe here](#)



© 2020 StratiCELL