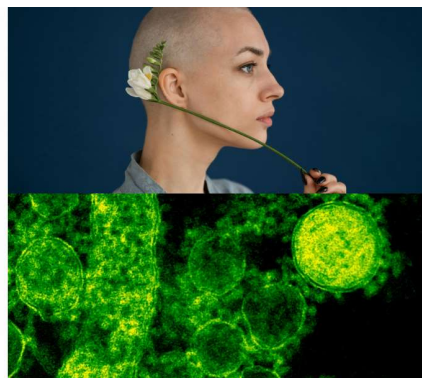


**FEBRUARY 5-6, 2025**

**32nd Skin Science Days**

**Mobilities and interactions :  
skin as dynamic ecosystem**



## Provisional program

### **Skin and nature**

#### **The environmental impact of sunscreens: myth or reality?**

Pr Philippe LEBARON | LBBM (Laboratoire de Biodiversité et Biotechnologies Microbiennes)

Pr Gilles COMTE | Centre d'Etude des Substances Naturelles, UMR-CNRS 5557- INRAE 1418, Université Lyon1, VetAgro Sup

#### **Decoding natural plant exosomes for skin & hair care and the discovery of exosomic peptides from plant biotechnology**

Stéphanie ALVES | Vytrus Biotech

### **Skin and brain**

#### **Peripheral neuro-cutaneous interactions in skin homeostasis and barrier function: in vitro and ex vivo approach using coculture model between sensory neurones and epidermal cells**

Dr Nicolas LEBONVALLET | CHU de Brest

#### **The value of cellular models for studying the crosstalk between sensory neurons and skin cells**

Elodie GRAS LAVIGNE | Neuron Experts

#### **Interactions that convey emotion in cosmetics**

Charlotte ROLLAND | newBrain

### **Microorganisms and skin**

#### **Contributory Role of Microbial and Phage Ecology in Scalp Disorders: a shotgun Metagenomics perspective**

Laetitia CATTUZZATO | Clariant

#### **Targeting Quorum Sensing communication mechanism to control motility and bacterial virulence on skin**

Sabrina LEOTY-OKOMBI | BASF Beauty Care Solutions

## **Skin as a dynamic ecosystem: Skin as a human and microbiota integrated functional ecosystem**

Isabelle METTON | Phylogene

## **Advancing Product Innovation and Personalization with AI Models from Skin Microbiome Data**

Elsa JUNGMAN | HelloBiome

### **Skin and skin**

#### **Intimate relationship between dermis and hypodermis. From 2D to 3D**

Jean-Michel LAGARDE | Imactiv-3D and Mayoura KEOPHIPHATH | DIVA Expertise

#### **Precision Medicine for Verneuil's Disease: AI-Driven Histological Analysis**

David ARGENTI and Elie PONCET | MoreHisto

#### **Spatial transcriptomics: what is it and what can it do for you?**

Dr Yad GHAVI-HELM | Institut de Génomique Fonctionnelle de Lyon (IGFL) UMR5242 CNRS - ENS de Lyon - UCBL - USC INRA

### **Young researchers**

#### **Investigating Damaged Skin as a Potential Route of SARS-CoV-2 Transmission**

Manon BARTHE | PKDERM

| CTIBiotech

| Kose Corporation

#### **Interactions between human papillomaviruses and their host in 3D models of skin epithelia: importance of keratinocyte/fibroblast communications**

Marta LAGANÀ - Université Paris Saclay

## **Sponsors**

